



Maestro BAL

Product Description

Maestro-BAL is a powered roof mounted axial fan ventilator that can be operated on one of its three fixed speeds for continuous extraction of moist air or can respond automatically to the roof space temperature and humidity.

Intelligent placement of the ember guarding allows for minimal impact to the airflow of the Maestro-BAL when compared to alternative products. The design complies with AS3959-2009 up to BAL-40 when installed as per the installation instructions.

It is not suitable for BAL-FZ installations.

Applications

For extraction of hot / humid / polluted air in residential buildings. Suitable for roof spaces that bathroom fans exhaust directly into. Can be wired to work simultaneously with other devices.

Can be installed on a variety of roofs including both metal and tiled. Suitable for use with galvanised and zincalume cladding material.

Benefits

Removes warm / stale air and moisture from the roof space. Automatic control of the ventilator in environmental control applications conserves energy by running only when required.

SKU Table

Colour	Maestro-BAL	Carton Size (L x W x H)
Headland	134207	520 x 270 x 520 mm
Night Sky	134205	520 x 270 x 520 mm
Surfmist	134206	520 x 270 x 520 mm
Woodland Grey	129247	520 x 270 x 520 mm
Manor Red*	134211	520 x 270 x 520 mm
Monument*	134208	520 x 270 x 520 mm
Pale Eucalypt*	134212	520 x 270 x 520 mm
Shale Grey*	134209	520 x 270 x 520 mm

* Colour made to order, Lead times apply

Product Specifications

General:	
Type	Axial flow fan roof ventilator
Fan Diameter	230mm
Throat Diameter	300mm
Product Weight	4.1kg
Packaged Weight	5.0kg
Roof Slope Installation Range	3° to 35°
Wind Speed Rating (Wind Loading)	57m/s (205.2 km/h) - Level 1 AS4740:2000

Maestro BAL

Product Specifications Continued

Material:	
Dome	Aluminium
Housing	Aluminium
Flashing	Aluminium (Soft) - 500x500mm
Sparkguard Mesh	Stainless Steel 304 Woven Mesh 0.6mmx1.9mmx1.9mm
Sparkguard Frame	Aluminium
Fan & Motor Housing	Plastic (PP-TD30)
Fan Impeller	Plastic (PA6-GF30)
Electrical Power Supply:	
Type	Electronic Switching Mode
Efficiency Class	Class V
Input Voltage	100-240 VAC, 1~, 50/60Hz
Output	24VDC
Installation Location	Indoor, dry area
Electrical Fan Motor:	
Type	Electronic Commutating (EC) Motor
Internal Voltage	24 VDC
Protection Class	IP54
Power Supply Cable Length	Approx 1.8m (see diagram)

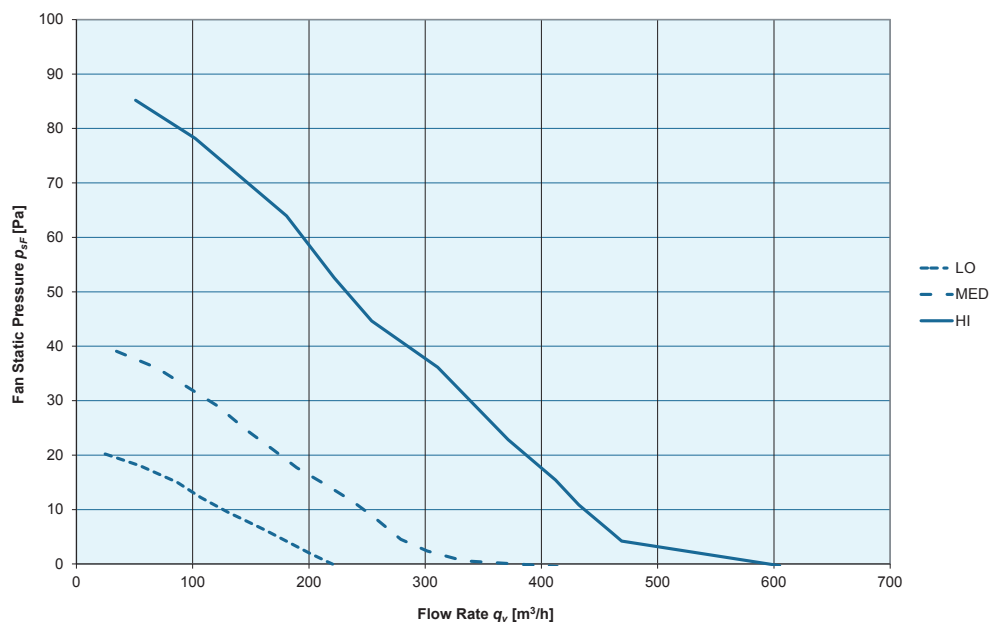
Performance

Speed	Sound Pressure Level LA @ psF = 0 [dB(A)] **	Max. running power consumption [W] *	Flow rate qv @ psF = 0 [m³/hr]	Specific Flow rate @ psF = 0 [m³/hr/W]
LO	35.4	4.8	220	45.8
MED	45.1	11.2	377	33.6
HI	52.9	30.8	596	19.4

* Primary side power consumption calculated by AS4665.1 using measured secondary side values.

** Sound Pressure Level measured 1m from inlet.

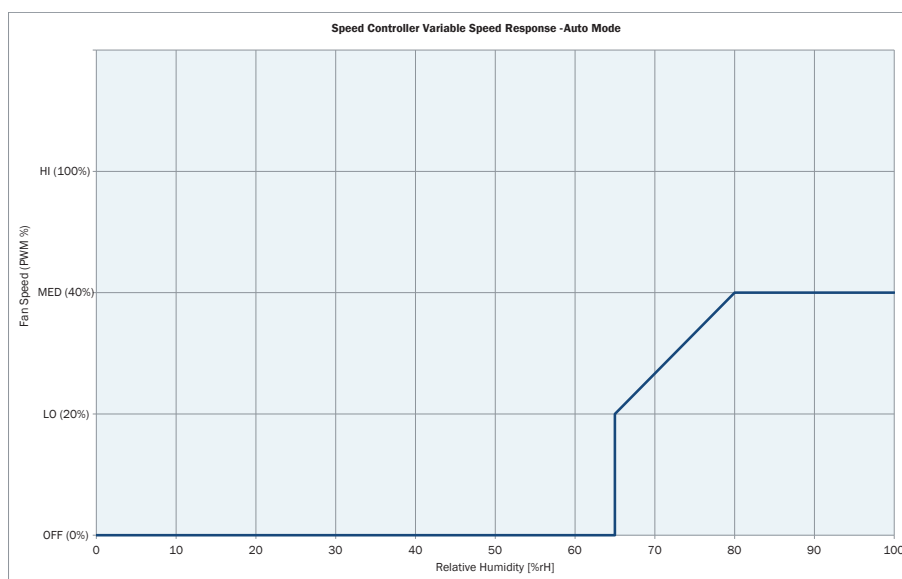
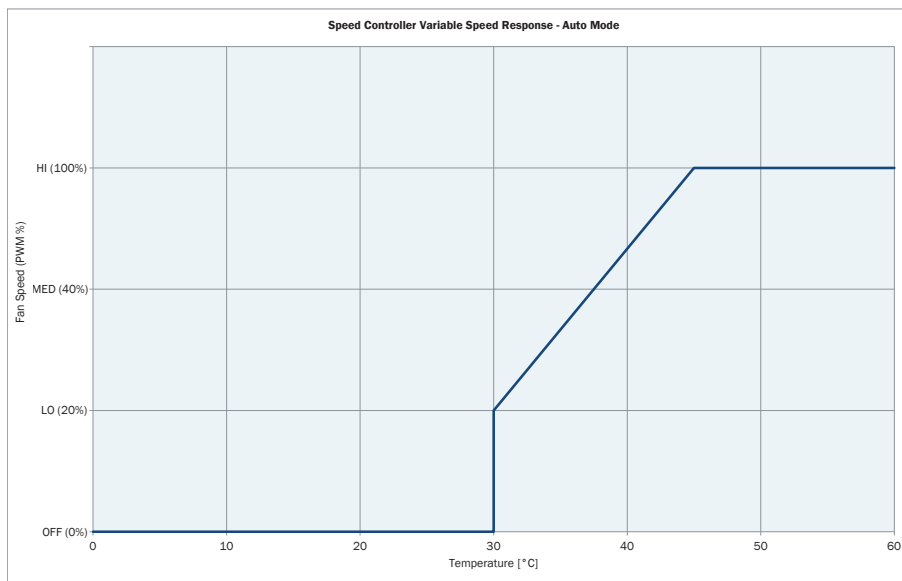
Characteristic Curves



Maestro BAL

Automatic Speed Control Operation

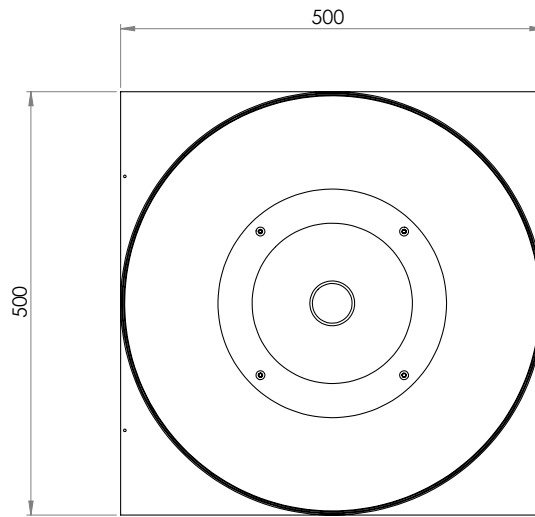
Type	Environment (Temperature and Relative Humidity) Sensing Electronic Speed Controller
Input Voltage	24 VDC
Installation Location	Dry indoor use only
Fixed Speed Operation	3 fixed speeds (LO, MED, HI), manually selectable via a button on controller
Automatic Variable Speed Operation	<p>Variable speed responds to both ambient temperature and to ambient relative humidity. The speed controller will run at the highest speed when comparing the appropriate response to each environmental factor.</p> <ul style="list-style-type: none"> - When measuring the temperature, the fan response will be off below 30°C. LO speed at 30°C and a linear increase in speed until HI speed is reached at 45°C. - When measuring relative humidity, the fan response will be off below 65%rH. At 65%rH the fan will start in LO speed and there will be a linear increase in speed until MED speed is reached at 80%rH. - The two charts below summarise the fan response.



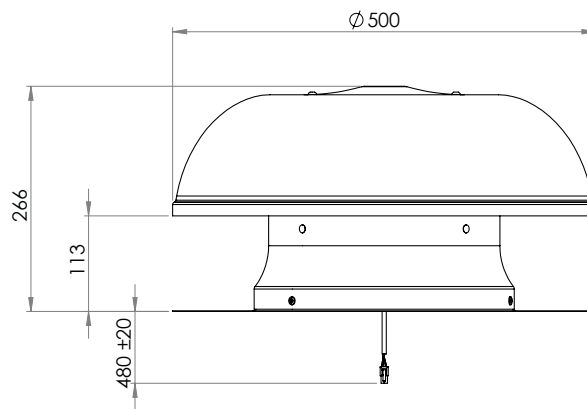
Maestro BAL

Drawings

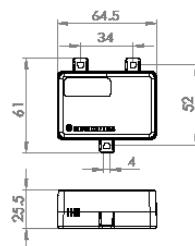
Top View



Front View



Speed Controller



Power Supply

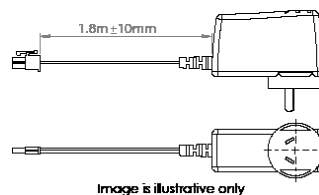


Image is illustrative only

Maestro BAL – DATA SHEET

Publish date: 11/16 Doc ref: TECHS-HT86

Rev: 0

EDMONDS
Technologies for a Sustainable Future

CSR Edmonds
10 Stanton Road, Seven Hills NSW 2147 Australia.
Telephone 1300 858 674

www.edmonds.com.au

CSR Edmonds is a business division of CSR Building Products Limited ABN 55 008 631 356

The contents of this document are copyright protected and may not be reproduced in any form without prior written consent of CSR Edmonds. Recommendations and advice regarding the use of the products described in this document are to be taken as a guide only, and are given without liability on the part of the company or its employees. We reserve the right to change product specifications without prior notification, please refer to the Edmonds website for the latest version of this document. The purchaser should independently determine the suitability of the product for the intended use and application.



CSR